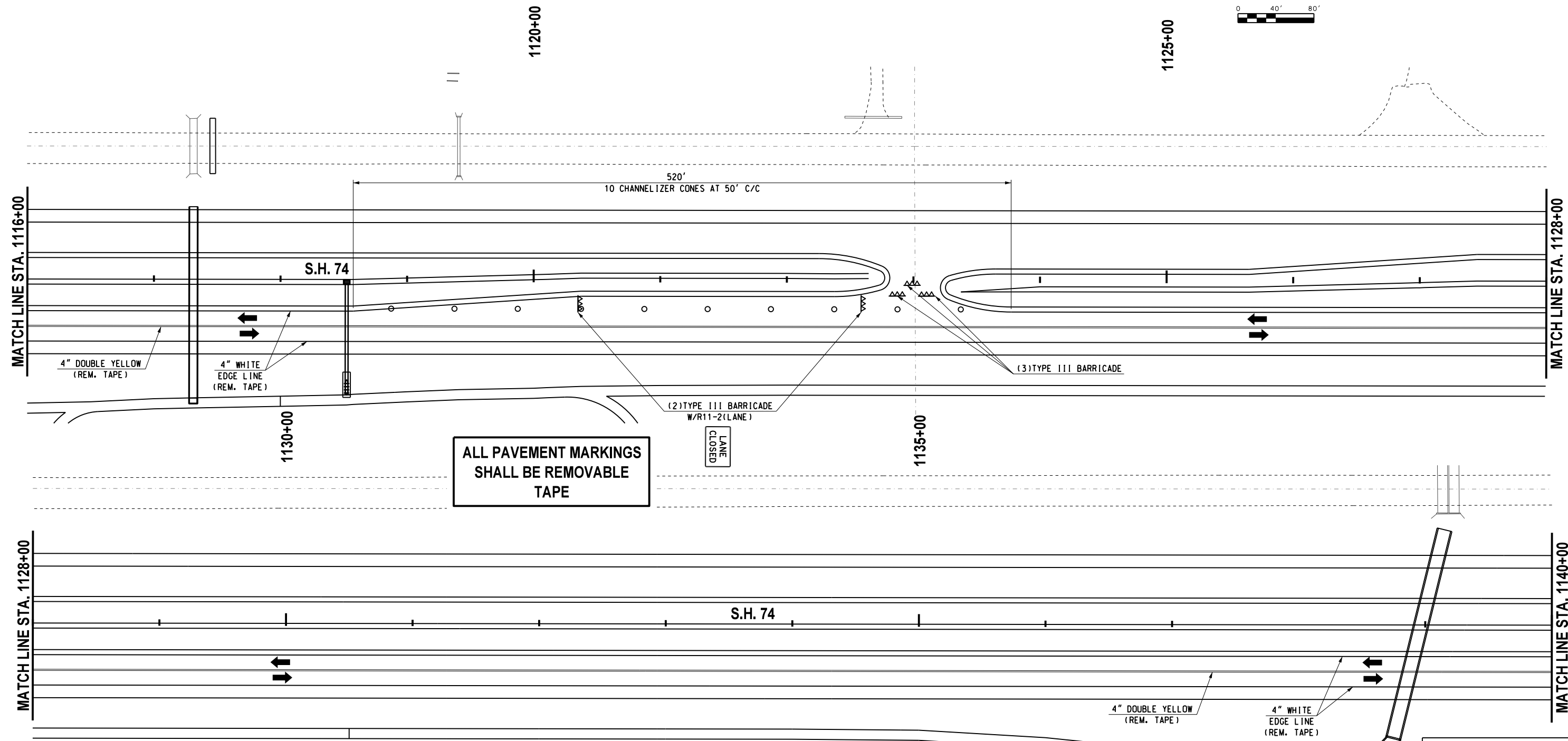
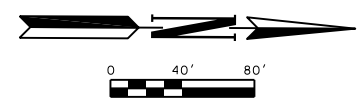


REVISIONS		
NO.	DESCRIPTION	DATE



**ALL PAVEMENT MARKINGS
SHALL BE REMOVABLE
TAPE**

**CONTRACTOR SHALL KEEP
11' MINIMUM LANES UNLESS
OTHERWISE NOTED.**

**CONTRACTOR TO PROVIDE
ACCESS TO ALL DRIVEWAYS
DURING CONSTRUCTION.**

LEGEND	
△△	- TYPE III BARRICADE W/ TWO TYPE "A" LIGHTS
●	- DRUM
○	- CHANNELIZER CONE
▬	- PORTABLE CONC. BARRIER WALL
▬	- CONSTRUCTION ZONE IMPACT ATTENUATOR
■	- WORK AREA

Design	RWR	08/10/17
Drawn	GDB	08/10/17

**TRAFFIC CONTROL
PHASES 2M (SHEET 3 OF 7)
S.H. 74 (STA. 1116+00 TO 1140+00)**
State Job No. 14964(08) Sheet No. T54

08/10/17 G:\0\Projects\T-1662B SH 74 @ NW 178th, NW 192nd & NW 206th\CAD\TC PHASE 2M_3 SH 74.dgn